



PIAVAL

MADE IN ITALY SINCE 1919

MATERIALS

WOOD AND TEXTILES

**TEXTILES
AND WOOD FINISHES**

CAT. X

Fabric

100% Polypropylene



480



481



482



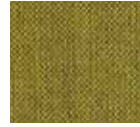
483



484



485



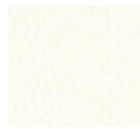
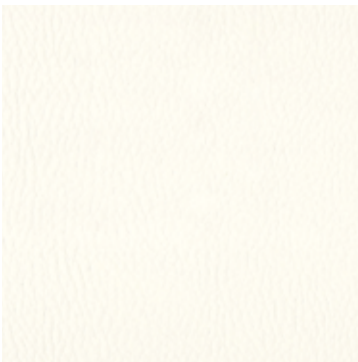
486



487

Vinyl

88% PVC, 6% Polyester, 6% Cotton



490



491



492



493



494



495



496



497



498



499

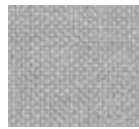
CAT. A

Fabric

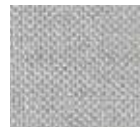
100% Polypropylene



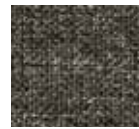
510



511



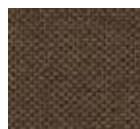
512



513



514



515



516



517



518



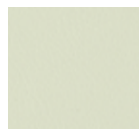
519

Vinyl

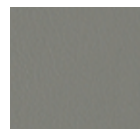
89% PVC, 11% Polyamide



530



531



532



533



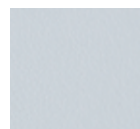
534



535



536



537



538



539

CAT. A

Vinyl

85% PVC, 2% Polyurethane, 13% Cotton



550



551



552



553



554



555



556



557



558



559

Fabric

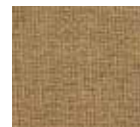
75% Trevira® CS Flame Retardant Polyester, 25% Polyester



570



571



572



573



574



575



576



577

Fabric

68% Polyester, 32% Polypropylene



770



771



772



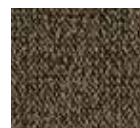
773



774



775



776



777



778



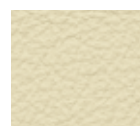
779

Natural Leather

100% Leather



790



791



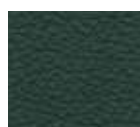
792



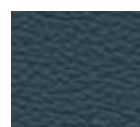
793



794



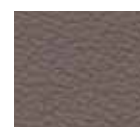
795



796



797



798

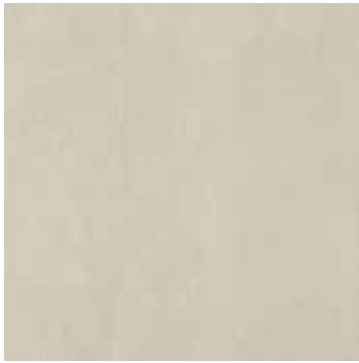


799

CAT. E

Velvet

100% Polyester



580



581



582



583



584



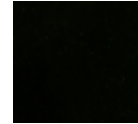
585



586



587



588



589

Velvet

100% Trevira CS



600



601



602



603



604



605



606



607



608



609

Fabric

100% PES



620



621



622



623



624



625



626



627

Wool Fabric - Felted Finish

100% Virgin Wool



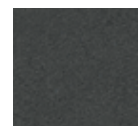
630



631



632



633



634



635



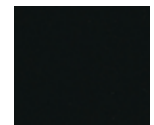
636



637



638



639

CAT. E

Vinyl

1% PU-finis , 73% PVC-compound, 26% CO-fabric



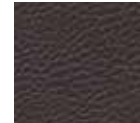
650



651



652



653



654



655



656



657

CAT. F

Fabric

100% Trevira CS



660



661



662



663



664



665



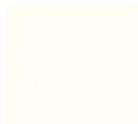
666



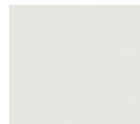
667

Silicone Leather

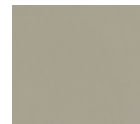
Eco-friendly, 55% Silicone, 45% Polyester



670



671



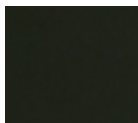
672



673



674



675



676



677



678



679

Fabric - Felted Finish

65% Wool, 15% Alpaca, 20% Polyamide



690



691



692



693



694



695



696



697



698



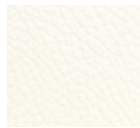
699

PIAVAL

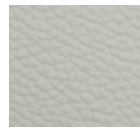
CAT. G

Natural Leather

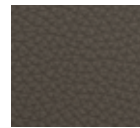
100% Leather



710



711



712



713



714



715



716



717



718

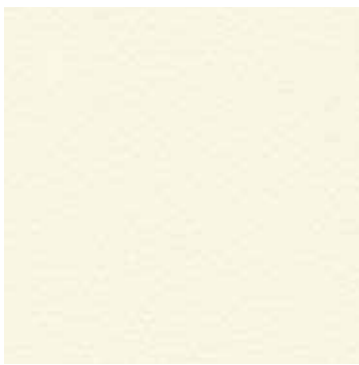


719

CAT. H

Natural Leather

100% Leather



730



731



732



733



734



735



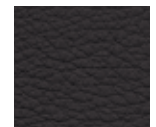
736



737



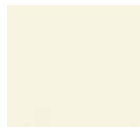
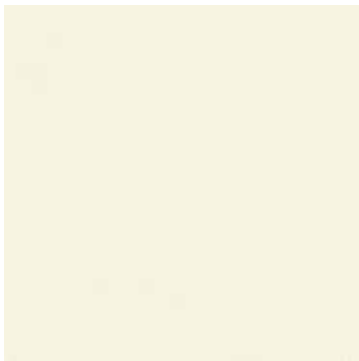
738



739

Natural Leather

100% Leather



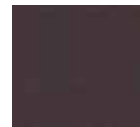
750



751



752



753



754



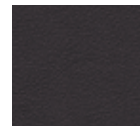
755



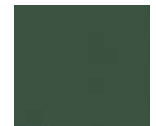
756



757



758



759

CAT. E**650 > 657**

features
1% PU-finish, 73% PVC-compound,
26% CO-fabric,
width cm ± 150, weight ± 780 g/m².

fire resistance
NF M2, BS5852 IS-0-1+5,
DIN EN 1021-1+2,
DIN4102(Part 1, B2),
mvss302, ONORM B3825
schwer brennbar (B1),
ONORM A 3800-1 Q2.

**CAT. F****660 > 667**

features
100% Trevira CS
width cm ± 140, weight ± 770 g/m²

abrasion resistance
> 45.000 rubs, ISO 12947-2.

colour fastness to light
5, ISO 105 B02.

fastness to rubbing
dry 5, wet 5, ISO 105 X12.

fire resistance
UNI 9177 - Class I; California TB 117:2013; EN 1021-1&2; BS 5852-Part 0-1 (C&M); IMO MSC 307(88); Annex 1 Part 7-8; NF P 92-503-507 M1; DIN 4102 B1.

**670 > 679**

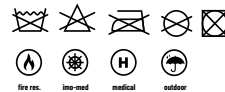
features
55% Silicone - 45% Polyester
width cm ± 137, weight 650 g/m²
thickness ± 0,95 mm.

abrasion resistance
> 100,000 rubs, ISO 12947-2.

colour fastness to light
7-8, ISO 105 B02.

fastness to rubbing
dry 4-5, wet 4, ISO 105 X12.

fire resistance
UNI 9175 11M; EN 1021-1&2;
BS 5852-Part 0-1; NF D 60-013;
California TB 117:2013;
NFPA 260 Class I; IMO FTP Code 307
part 8; ONORM B 3825.

**690 > 699**

features
65% Wool - 15% Alpaca - 20% Polyamide, width cm ± 142,
weight ± 420 g/m².

abrasion resistance
> 80.000 rubs, ISO 12945-2.

colour fastness to light
4/5, ISO 105 B02.

fastness to rubbing
dry 4/5, wet 4/5, ISO 105 X12.

fire resistance
UNI 9175 11M; California TB 117:2013; EN 1021-1&2; BS 5852-Part 0-1 (C&M).

**CAT. G****710 > 719**

features
100% Leather
thickness ± 1,00 - 1,20 mm.

tear strenght
≥ 20 N ISO 3377-1.

flex resistance
> 50.000 rubs, ISO 5402-1.

adhesion of finishing
≥ 2 N/10mm ISO 11644.

colour fastness to light
5, EN ISO 105-B02 (Met. 3)

fastness to rubbing
dry 4, wet 4, EN ISO 11640

fire resistance
EN 1021-1; EN 1021-2; B55852:Source 0; B55852:Source 1;
Cal TB117;
NFPA 260/UFAC.

**CAT. H****730 > 739**

features
100% Leather,
thickness ± 1,3/1,5 mm.

colour fastness to light
8, ISO 105 B02.

tear strenght
≥ 121N/mm ISO 3377-1.

flex resistance
> 50.000 rubs, ISO 5402

adhesion of finishing
13,4 N/cm ISO 11644.

fastness to rubbing
dry 4/5, wet 4, ISO 11640.

fire resistance
UNI EN 1021-1:2014 NI/O; UNI EN 1021-2:2014 N²; Imo FTP:
Part 8-Resolution A.652 (16) NI/O - NI/1; California TB 117-
A11@2013:2013

**750 > 759**

features
100% Leather
thickness ± 1,1/1,2 mm.

colour fastness to light
8, ISO 105 B02.

tear strenght
≥ 34 N/mm ISO 3377-1.

flex resistance
> 50.000 rubs, ISO 5402

adhesion of finishing
3,5 N/cm ISO 11644.

fastness to rubbing
dry 4, wet 5, ISO 11640.

fire resistance
UNI EN ISO 1021:2014;
Part 8-Resolution A.652 (16) NI/O - NI/1; California TB 117-
A11@2013:2013



WOODS



01



102



107



139



141



143



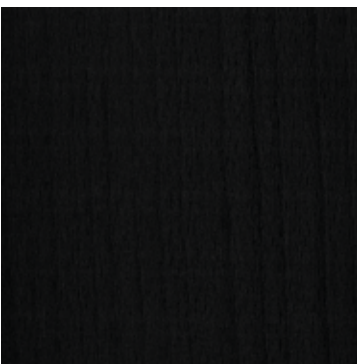
144



145



146



147



148

Water based lack

For the painting cycle of her products, the company Piaval also uses water based paints in order to minimize the impact on the environment and to obtain a product that doesn't release toxic substances (solvent) after the paint drying too.

Vernici all'acqua

Per la verniciatura dei propri prodotti, Piaval utilizza anche vernici a base d'acqua al fine di minimizzare l'impatto sull'ambiente e per ottenere un manufatto che non rilasci sostanze tossiche (solventi) anche dopo l'asciugatura della vernice.

Customer's stain colours

Special wood colour finishings not included in the standard range of colours are realised by receipt of a sample and implies a price increase following the current price list.

Tinte speciali

Tutti i colori che non rientrano nella gamma standard sono realizzabili solo previa presentazione di un campione. La realizzazione di una tinta speciale implica un supplemento di prezzo secondo le tariffe in vigore.

Variations in colour

Wood is a natural material. Each trunk has a different colour and structure and determines wood colour differences which can not be considered defect of the product Piaval.

Variazioni di tinta

Il legno è un materiale naturale. Ogni tronco presenta un colore e una struttura diversa e ciò determina delle variazioni nella tinta. Le diversità di tinte dovute alla struttura naturale del legno non possono essere imputate come difetto alla ditta Piaval.

Cleaning of the painted surfaces by water-based products

Do the cleaning of the painted surfaces by using a wet cloth and a neuter detergent. Do not use any detergent with alcohol, ammonia or other aggressive chemical substances. After cleaning, dry the painted surfaces.

Pulizia delle superfici verniciate con prodotti a base d'acqua

Eeguire la pulizia delle superfici verniciate utilizzando un panno umido e detergente neutro. Non utilizzare detersivi contenenti alcool, ammoniaca o altre sostanze chimiche aggressive. Dopo la pulizia asciugare le superfici verniciate.

SUSTAINABILITY

Certifications

The concrete commitment to the environment has always identified Piaval's chain. The processing waste is turned into biomass to produce 100% of the heating and the energy for the drying process.

A solar panel system produces clean energy. All products are made using environmentally friendly materials and manufacturing processes. The compounds used are not harmful to the health and the varnish cycle is strictly water-based, a choice adopted over 15 years ago.

L'impegno concreto per l'ambiente identifica da sempre i processi produttivi Piaval.

La biomassa ricavata dagli scarti di lavorazione garantisce il 100% del fabbisogno di riscaldamento e il funzionamento dell'impianto di essiccazione. Il sistema fotovoltaico fornisce energia pulita.

I prodotti sono realizzati con materiali e processi di lavorazione eco-compatibili. Vengono utilizzati composti non dannosi per la salute e il ciclo di verniciatura è rigorosamente all'acqua, una scelta adottata da oltre 15 anni.



The mark of responsible forestry

Ask for FSC® certified products



ERGOCERT

Piaval is among the first Italian chair companies to guarantee a scientifically validated level of comfort. Many models obtained Ergocert Class A and Ergocert Class A+, attesting their conformity to the highest ergonomic and usability standards,

Piaval è tra le prime aziende italiane che possono garantire un indice di comfort delle sedute testato scientificamente. Molti modelli sono certificati Ergocert Class A ed Ergocert Class A+, in conformità ai più alti standard di ergonomia e usabilità.

UNI EN ISO 9001:2015

Piaval is certified in the UNI EN ISO 9001:2015 standard focused on quality management, which attests to the adoption of accurate control systems at every stage: from design to production and customer care.

Piaval è certificata UNI EN ISO 9001:2015 per la gestione della qualità, che attesta l'adozione di accurati sistemi di controllo in ogni fase: dalla progettazione, alla produzione fino all'assistenza ai clienti.

FSC®

On request, products can therefore be FSC® certified, as they are made using FSC® certified material and other controlled materials.

Su richiesta i prodotti possono essere certificati FSC®, composti da materiale certificato FSC® e di altro materiale controllato.

CATAS

The resistance, safety and durability of the products are tested by the most important Italian institute for certification, research and testing within the wood and furniture industry, a centre of excellence in Italy and around the world. Seats and backs, are subjected to 200,000 cycles of load tests.

La qualità, la resistenza alla sollecitazione d'uso, la sicurezza e la durata dei prodotti sono testate dal più importante istituto italiano per la certificazione, ricerca e prove nel settore legno-arredo, punto di riferimento in Italia e nel mondo. Sedili e schienali sono sottoposti a 200.000 cicli di prova di carico.

PIAVAL SRL

via del Collio 57

33048 San Giovanni al Natisone (UD)

T +39 0432 756046

F +39 0432 756815

info@piaval.it www.piaval.it

PIAVAL

MADE IN ITALY SINCE 1919